



# E.A.P.C focus on Palliative Medical and Nursing Education

Dr. Philip J Larkin  
Professor of Clinical Nursing ( Palliative Care),  
University College Dublin and Our Lady's  
Hospice, Dublin, Ireland.

# Proposal for presentation

- Best principles in palliative care education
- Overview of the E.A.P.C. guidelines/curricula for palliative medical and nursing education.
- Next steps – The “Stage” opportunity programme.

European Association for Palliative Care

# A Guide to the Development of Palliative Nurse Education in Europe

Palliative Nurse Education:  
Report of the EAPC Task Force

DE VLIENER Martine (Belgium)  
GORCHS Nuria (Spain)  
LARKIN Philips J. (Ireland)  
PORCHET Françoise (Switzerland)

EAPC

[www.eapcnet.org](http://www.eapcnet.org)



September 2004

# Curriculum in Palliative Care for Undergraduate Medical Education for Undergraduate Medical Education

Recommendations of the  
European Association for Palliative Care

Report of the EAPC Task Force on Medical Education







## European Association for Palliative Care

*Une voix  
une vision*

*Una sola  
voz una  
sola vision*

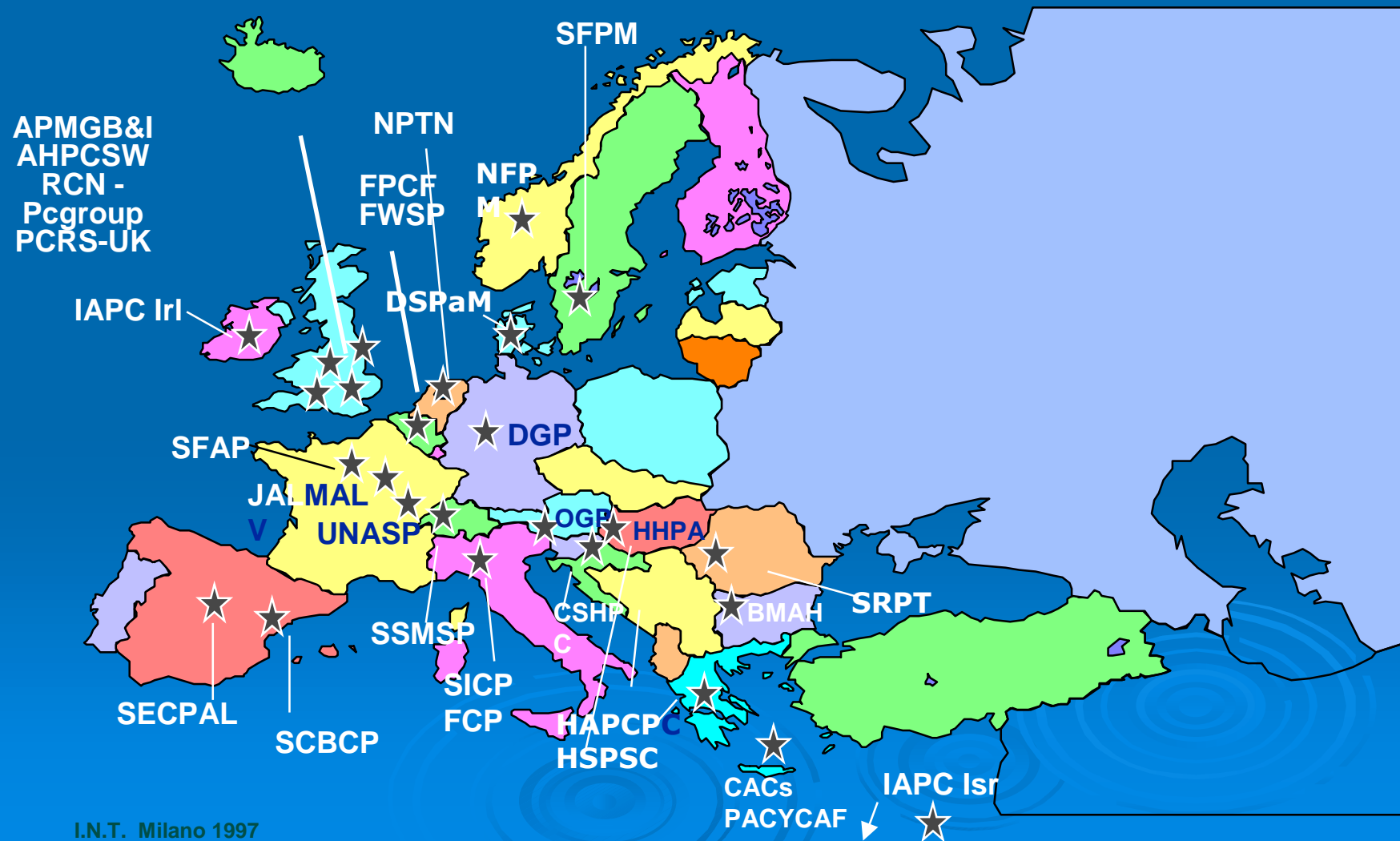
**one  
voice  
one  
vision**

*Eine Stimme  
eine Vision*

*Una sola  
voce un'idea  
comune*



## Collective Members of the EAPC in 2008.



## Map of Central and Eastern Europe



© The Regional Environmental Center for Central and Eastern Europe

# Vision





# Clarity of purpose



# Stability



# Collaboration





# Marketability



European Association for Palliative Care

# A Guide to the Development of Palliative Nurse Education in Europe

Palliative Nurse Education:  
Report of the EAPC Task Force

DE VLIETTER Martine (Belgium)  
GORCHS Nuria (Spain)  
LARKIN Philips J. (Ireland)  
PORCHET Françoise (Switzerland)

EAPC

[www.eapcnet.org](http://www.eapcnet.org)



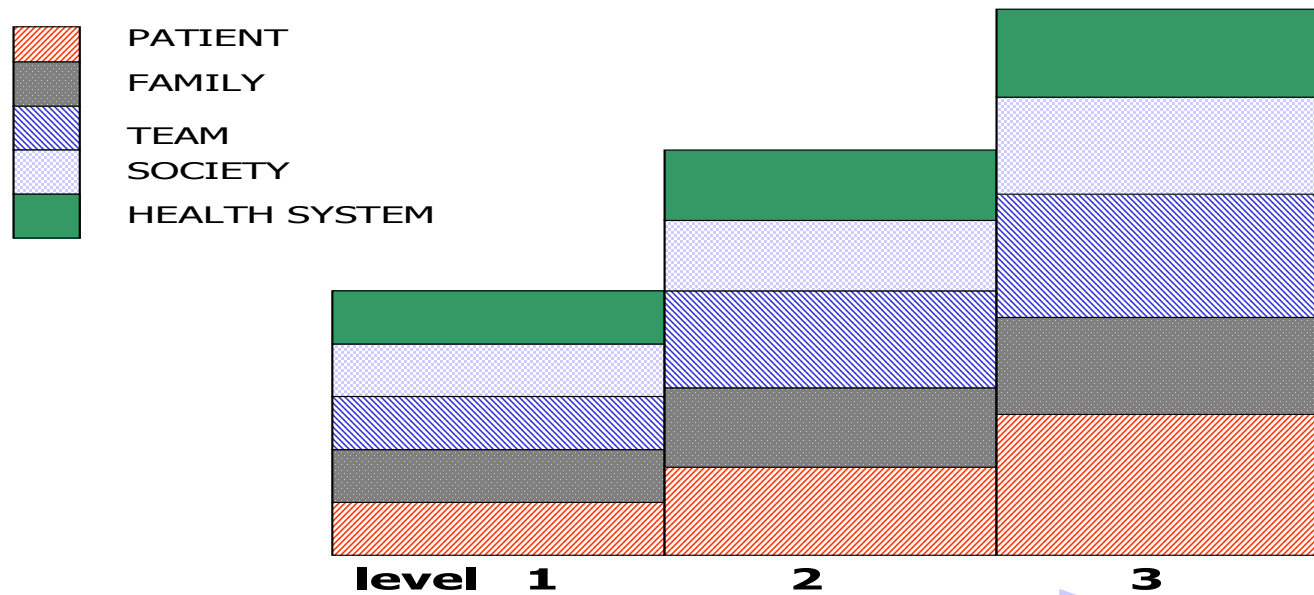
September 2004



# Original Taskforce Members.

- Philip Larkin, Ireland.
- Martine De Vlieger, Belgium.
- Francoise Porchet, Switzerland.
- Nuria Gorschs, Spain.

## DIMENSIONS OF THE PALLIATIVE CARE LEARNING PROCESS



**self-awareness + communication + ethics**

# Recommendations.

- Adult Learning approaches.
- Partnership between Education Centre and Clinical Area.
- Clear understanding of achievement and measurable outcomes.
- Interdisciplinary Education.
- Qualifications for Teachers.

# Statements for Practice.

- What can reasonably be expected of a nurse practitioner on completion of a course at each prescribed level.



	Level A	Level B	Level C
<b>Observation, evaluation and symptom management</b>			
Evaluation: Assessment tools- multifaceted approach – clinical examination – differential diagnosis : physiological systems - aetiology of disease –clinical profile - documentation		x	x
Common symptoms: Pain, G.I. Tract, dyspnoea anorexia-cachexia, weakness. Dry & sore mouth. confusion, depression etc	x	x	x
Applied pharmacology, drug treatment of common symptoms. Side effects, Continual observation & evaluation.		x	x
Drug pharmacokinetics and Drug interactions.		x	x
Modes of administration (oral, enteral, subcutaneous intravenous rectal, transdermal)	x	x	x
Palliative Care Emergencies : Spinal Cord Compression, Haemorrhage SVC syndrome, Hypercalcaemia	x	x	x
Difficult symptoms e.g cough, fungating malignant tumours, faecal incontinence, fistulas, skin problems		x	x
Psychological and/or psychiatric intervention		x	x
Role of physiotherapist and occupational therapist		x	x
Spiritual approaches to care		x	x

⚠ The expression “ patient ” represents all human beings regardless of age.

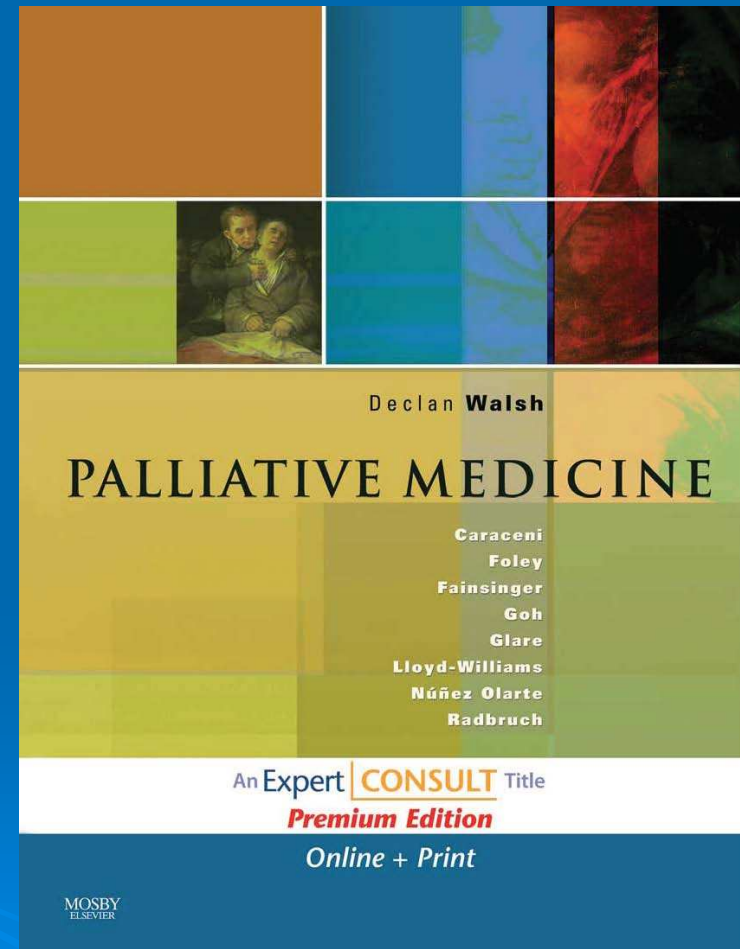


# Foundation in:

- Belgium
  - Switzerland
  - Netherlands
  - Iceland
  - Scotland
  - Republic of Ireland
  - Luxembourg (2008)
- 

# Dissemination

- International presentations
- Open University Press publication
- Publications in
  - Palliative Medicine
  - European Journal of Palliative Care



# Curriculum in Palliative Care for Undergraduate Medical Education for Undergraduate Medical Education

Recommendations of the  
European Association for Palliative Care

Report of the EAPC Task Force on Medical Education





# European Association for Palliative Care

*Non Governmental Organisation (NGO) recognised by the Council of Europe*

## **Membership of the group:**

**Dr. Marilène Filbet (ex-chair) France**

**Prof. Carlos Centeno, Spain**

**Prof. John Ellershaw, U.K.**

**Prof Dr. Frank Elsner, Germany ( new Chair, 2008)**

**Dr. Steffen Eychmüller, Switzerland**

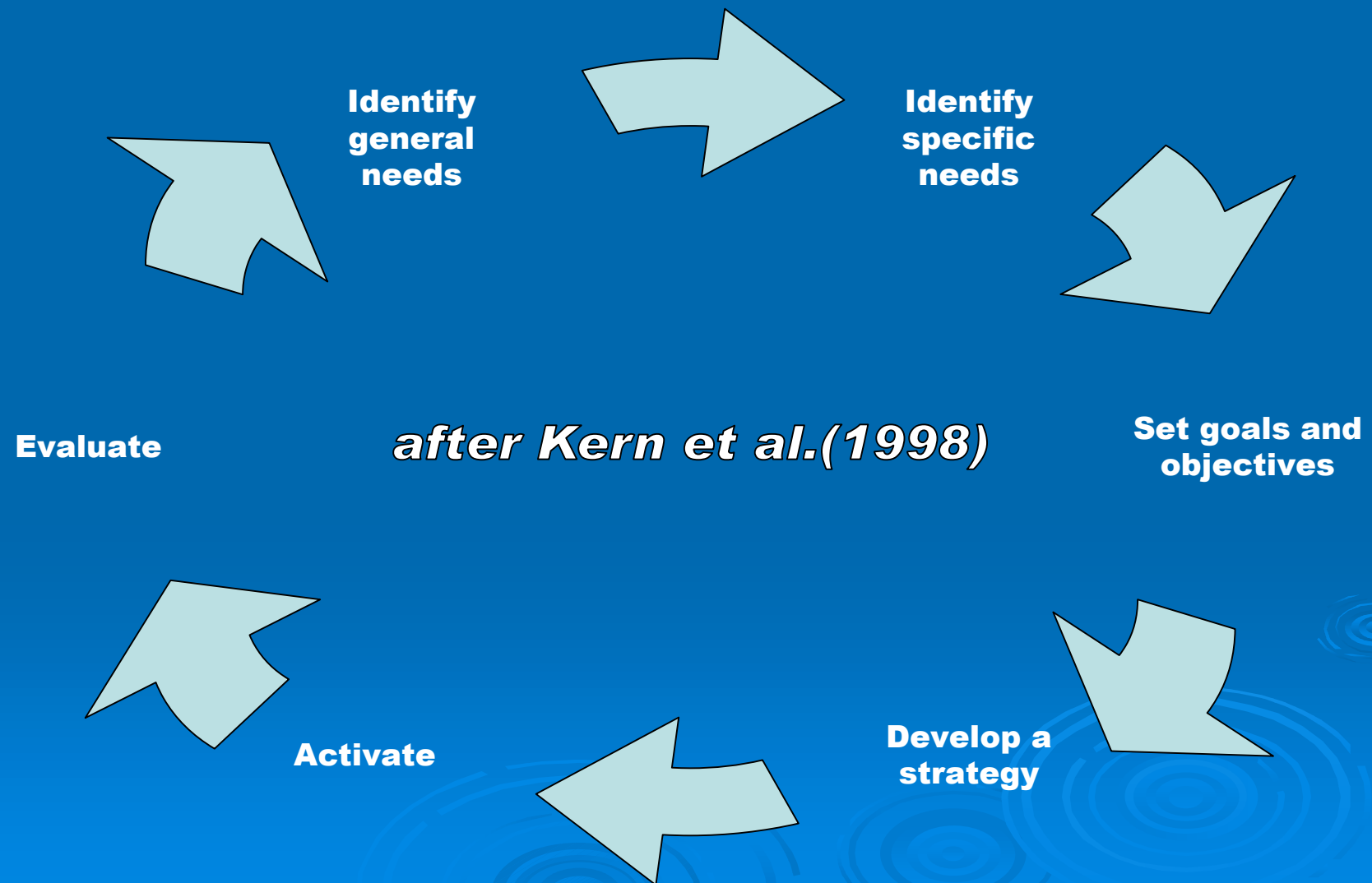
**Prof Dr Philip Larkin, Ireland**

**Prof Dr Stein Kaasa, Norway**

**Dr.Franco de Conno, Italy**

**Mme Heidi Blumhuber, Italy ( E.A.P.C Secretariat)**

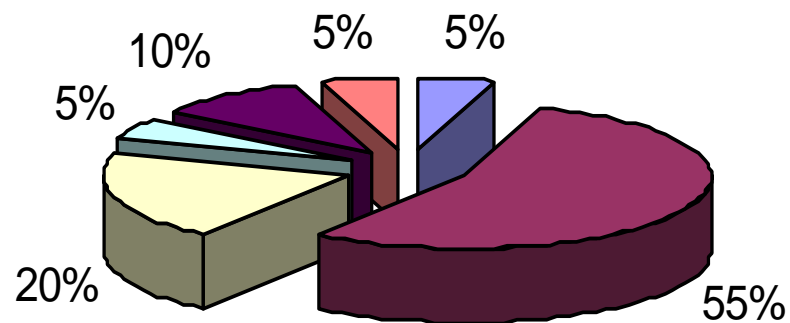
# Medical Education Strategy





# Medical Syllabus

## Division of Palliative Medical Education Syllabus



■ Basics of Palliative Care

■ Pain and Symptom management

■ Psychosocial and Spiritual Aspects

■ Ethical and Legal Issues

■ Communication

■ Teamwork & Self-reflection

# Next Steps for Palliative Care Education

- Evaluation of the Nursing Guidelines
- A curriculum for Postgraduate Medical Education ( Specialist practice)
- E.P.S.O. project

# European Palliative Stage Opportunity [E.P.S.O]



Developing a clinically focused  
practicum for palliative care  
learning

# Aim of the project

- To provide a clinical practice opportunity for palliative care practitioners to develop their knowledge, skills and clinical experience in a different clinical setting/context.

# Taskforce Membership

- Tine De Vlieger, Belgium [Chair]
- Phil Larkin, Ireland
- Françoise Porchet, Switzerland
- Corry van Tol, Netherlands
- Avril Jackson, United Kingdom
- Marilène Filbet, France



# Format

- E.A.P.C. Web-based information regarding a range of clinical practice opportunities.
- Guidelines and information on how to create a suitable clinical learning opportunity.



# Pilot project 2008

- 5 countries acting as pilot project
  - United Kingdom
  - Ireland
  - Switzerland
  - Belgium
  - Netherlands

# Process

- Host Centres complete details about their service and learning opportunities.
- Applicant accesses information on a range of suitable centres approved by National Association.
- Applicant applies to chosen centre[s] through website.
- Link directly between applicant and host centre.

# Process Evaluation

- Evaluated by E.P.S.O team on completion of the Stage with both Applicant and Host Centre.
- Aim to roll out to all collective members by 2009.



**European Association for Palliative Care**

*Non Governmental Organisation (NGO) recognised by the Council of Europe*